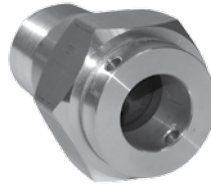


# Rupture Disc

## Rupture Disc Features:

### Increases Plug Life

- Disc activates at 60% over required inflation pressure
  - Helps prevent "non-visible" damage to cording
  - Rupture disc won't burst until well over stated inflation pressure
  - No more catastrophic plug failures due to faulty gauges
  - Discs can be replaced in field



**All Rupture Discs are Field Replaceable**

**240008**  
Rupture Disc for Test Balls and Air-Loc Plugs with inflation pressures of 22-25 psi.

### Improves User Safety

- Reduces the possibility of plug explosion due to over-inflation



**240068**  
Rupture Disc for Muni-Balls with inflation pressure of 22-25 psi.

### Superior components/design

- Aluminum housing - will not rust
- Graphite rupture disc
  - Leak-free design
  - Precision calibrated

**220028**  
Rupture disc for Test Balls, Muni Balls, and Air-Loc Plugs with inflation pressure of 11-12 psi.

# High-Pressure Plugs

## Our High-Pressure plugs feature:

- Multi-range use (6 plugs will cover pipe sizes from 4" to 32")
- Unlike competitive products, Cherne's new HP plug has the rubber and metal bonded, eliminating fears of separation or rolling off resulting from high backpressures
- Aramid fiber construction
- Optimized design using steel, aramid and natural rubber to ensure longevity and robust construction
- Water must be used to pressurize these plugs due to high working pressure
- Removable and field repairable hardware
- Safety/over-inflation device



**New Product!**

Part Number	Plug Description	Bypass Diameter (NPT)	Usage Range	Maximum Back Pressure	Inflation Pressure	Product Weight	Deflated Length	Deflated Diameter	Inflation Thread	Chain / Eye bolts
511088	4" - 8" (102-203 mm)	3/8" M	3.8" - 8.2" (97-208 mm)	150 psi (10,34 bar)	200 psi (13,79 bar)	8 lbs (3.63 kg)	16" (406 mm)	3.8" (97 mm)	1/8"	None
511128	8" - 12" (203-305 mm)	3/4" M	7.7" - 12.2" (196-310 mm)	150 psi (10,34 bar)	200 psi (13,79 bar)	24 lbs (10.89 kg)	16" (406 mm)	7.7" (196 mm)	1/4"	1
512168	12" - 16" (305-152 mm)	2" M	11.9" - 16.2" (302-411 mm)	150 psi (10,34 bar)	200 psi (13,79 bar)	52 lbs (23.59 kg)	16" (406 mm)	11.9" (302 mm)	1/4"	1
512208	16" - 20" (152-508 mm)	2" M	15.2" - 20.2" (386-513 mm)	150 psi (10,34 bar)	200 psi (13,79 bar)	92 lbs (41.73 kg)	16" (406 mm)	15.2" (386 mm)	1/2" & 1/4"	2
512268	20" - 26" (508-660 mm)	2" M	19.2" - 26.2" (488-665 mm)	150 psi (10,34 bar)	200 psi (13,79 bar)	146 lbs (66.22 kg)	16" (406 mm)	19.2" (488 mm)	1/2" & 1/4"	2
512328	26" - 32" (660-813 mm)	2" M	25.8" - 32.2" (655-818 mm)	150 psi (10,34 bar)	200 psi (13,79 bar)	371 lbs (168.28 kg)	16" (406 mm)	25.8" (655 mm)	1/2" & 1/4"	4

Pressurize with water.